



Solar PV Module
Mounting Structures
for Quick and
Reliable Installations

LONG RAIL STRUCTURES

Solar Module Mounting Structures for Metal Roofs - Long Rail

Highlights

- Optimized for cost effectiveness
- No corner clamping, design is supportive to modules
- Ease of Installation
- Design with stability
- Validated through physical testing and FEA analysis
- Suitable for coastal regions
- High quality engineered profile extrusion made of aluminum material (AL6063-T6 Grade)
- Design for winds-peed as per IS875 part 3 code
- High quality self tapping screws for sheet joints



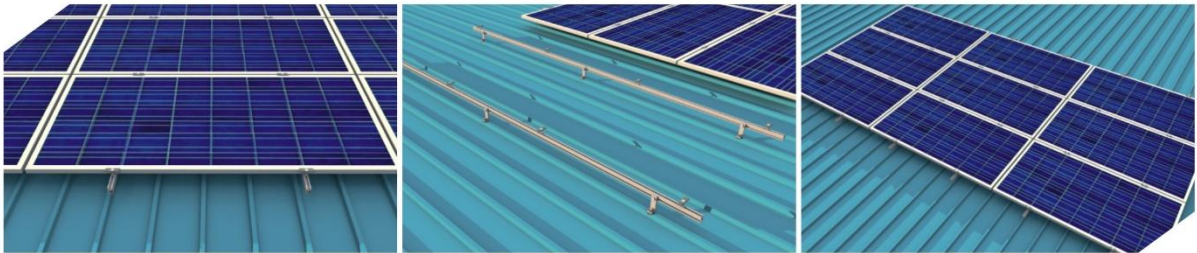
Module Orientation
Landscape



Application
Suitable for older trapezoidal metal roofs where distance between roof purlins is higher

Outline

- Long Rail Bracket connects on the top of the metal sheet ribs which avoid water pooling
- Suitable to be used on trapezoidal roofs with slope
- Holes to easily fix the self tapping screws with existing purlins below the metal roof, increases strength
- Use of EPDM washer between rail and sheet, covering all site with silicone sealant leads to leakproof installation
- Clamps with similar material allows simple and quick fixing
- Safe and aesthetic installation
- Ease to assemble structure enabled the rapid lead period and significant upfront cost savings
- Clamp design through FEA method
- Available in mill finish as well as anodized form
- Landscape module orientation
- Widely used for any specification modules
- Having standard clearance for sheet top as per Module OEM



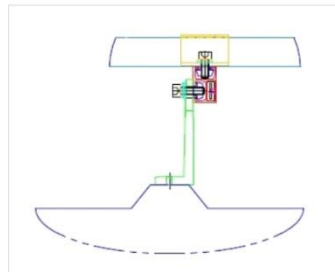
Main Components

- Long Rail – 110mm height and available in all lengths

Accessories

- Mid Clamp
- End Clamp
- Rail Nut with M8 Internal Thread
- Rivet M4.8 for Penetration
- Socket head cap screw

Orientation



Technical Specifications

Details	
Scope of Application	Trapezoidal and Sinusoidal
Fixing Type	1. High quality self tapping screws for penetration type 2. Along with SS304 fasteners
Module Type and Orientation	Framed modules and Landscape
Technical Specifications	1. Clearance to roof 110mm 2. As per IS875-3
Materials	Aluminum 6063-T6 Grade